

DeepStream Designs

Anti-Gravity Frame System©

Framework for creative expression

DeepStream's modular Anti-Gravity Frame System© makes it easy to add custom finishing touches to many aspects of your projects without the custom cost.

Let your imagination run wild! What was previously impossible, expensive, time consuming and frustrating for your creative side is now enjoyable. Relax knowing that your creations will stand the test of time while showcasing your creativity as you exceed your clients' expectations.

Sophisticated yet rugged Anti-Gravity structural components are appropriate for both interior and exterior rectilinear applications. They are easily configured, and then quickly assembled into a wide variety of uses even by unskilled labor, making this a hassle-free, cost-effective choice.

DeepStream's American-made component system accommodates any panel material that you can think of: rugged or fragile, thin fabric or thick panels in continuous runs of up to 22 feet, or assembled in modular runs of any length. Internal channels can hide wiring for a clean look in your most creative projects.

Does your client need a modern massage cabana with romantic drapes on a windy roof deck or have a pool area that needs a combination of soft and solid walls and ceiling? Roller shades? Integrated speakers? Done. A shelf or a platform for a sun bed? No problem. It has to come down or be changed seasonally? Done in an hour by maintenance staff.

That winter windbreak for the Jacuzzi at your clients' ski area project just became an award - winning design opportunity.

How about an integrated planter / glass wall / railing around a pool or dividing a reception area and walk way? Simple.



Anti-Gravity Frame System

A spectacular living wall of planters and trellises? DeepStream provides both standard and custom planter sizes, styles, and trellis options.

Do you need a privacy divider for adjacent balconies or a sidewalk café? Screening for a hot tub or nude sunbathing area? Planters, with a trellis, are a perfect "code loophole" that will delight your client.

Need a glowing wall of translucent 3Form® to separate a lobby from a bar, or hide a bell station? It's done in just a few hours and the look can be easily modified or reconfigured.

Temporary or permanent kiosks, cabanas, soukahs, 2-3-4 station cubicles, room dividers, full floor-to-ceiling or half wall booths, voting booths, trade show exhibits - the AG system makes them easy - a modern, interesting frame for any material. Complex structures go up in hours, cubicles in minutes, and they can even be placed on casters!

That unsightly backflow preventer, gas meter, utility box, smoking area, or waste bins can just disappear behind custom-designed screening unique to YOUR project.



Does your client need high-quality modular signage or POP material that can be changed daily by staff if required? Standard.

Logos or statements? Of course.

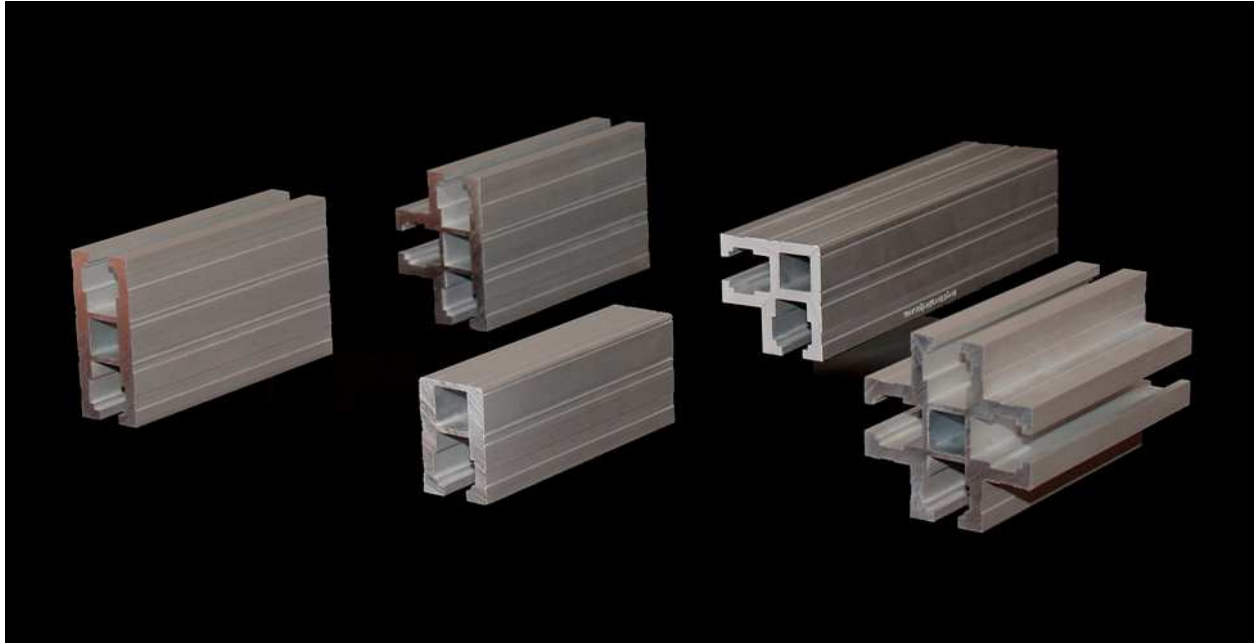


Is your client going Green? DeepStream's standard recycling and rubbish bins blend into the project using materials you select. They can easily incorporate logos, signage, or your message instead of a standard institutional look.

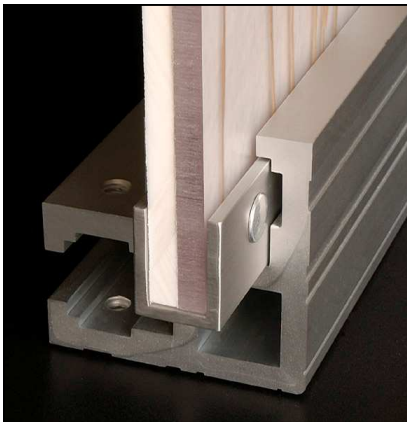
DeepStream's Anti-Gravity System makes it easy to bring your creativity to the broadest strokes or the smallest details of your projects effortlessly and cost effectively!

DeepStream Designs Anti-Gravity Panel System© Components

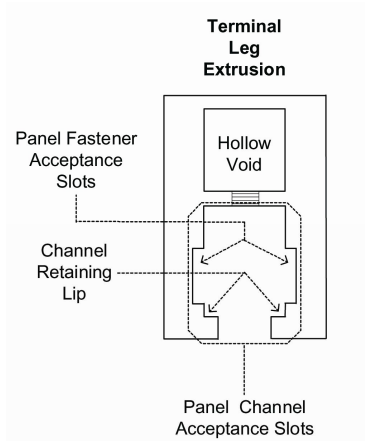
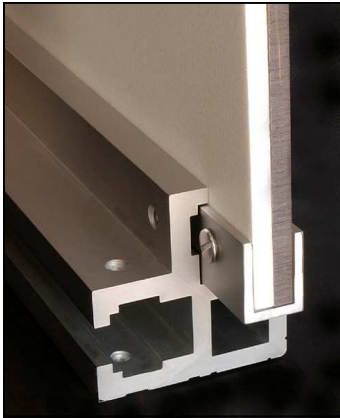
The Backbone: Marine Anodized Aluminum Extrusions



Five primary heavy weight extrusions make up the backbone of the system. Panels of virtually any size or material are captured along the edges by U-channel held in place by removable post screws.



Panel edges are then inserted into slots in the extrusions and captured by the outer lips of the slot. Extrusions can be joined directly to each other at 90° using Track-to-Void connectors or by the rigid panels themselves.



Each of the five primary heavyweight structural extrusions incorporates four features that, along with the **U-channel**, are the basis for the system's ability to create robust products and complicated structures quickly and simply using only a screwdriver and an allen key.

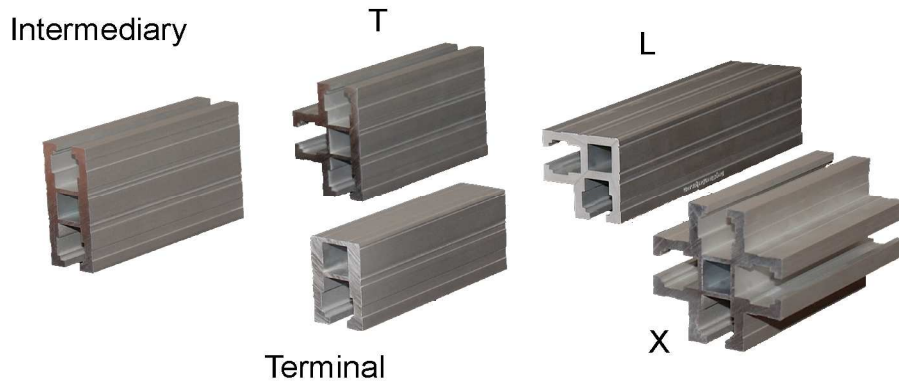
Panel Channel Acceptance Slot — The large slot in each extrusion accepts panels up to ½" thick, or the variable **V-Clips** that can hold panels of any thickness. Fabric panels with pockets can be held in place with ¾" tubing.

Panel Fastener Acceptance Grooves — at the slots' outer edges are unique to DeepStream Designs' Anti-Gravity system. They facilitate quick and easy changes to the look or replacement of damaged components by maintenance staff. This unique feature also acts as the track to capture threaded backing clips for corner braces and un-jammable track slides for fabric curtains.

Channel Retaining Lip — at the outside edge of the slot keeps panels and V-clips securely in place regardless of the load.

¾" Void — allows for the attachment of accessories such as Track-to-Void Connectors to join two extrusions at right angles, finishing caps, stainless steel security and mounting feet, HDPL sliding feet, casters, floor levelers, ceiling mounting posts. Wiring can be run in this void and brought out at exactly the right place, giving a professional finish.

Five primary heavy weight extrusions make up the backbone of the system:



L: With twin slots at 90°, this L-shaped extrusion is the perfect corner for DeepStream's Audubon planters, recycling bins, cabanas, railings, and tradeshow booths. As the top bar on a cabana, it facilitates a *horizontal* ceiling *and* a *vertical* run of curtains or rigid panels. It is also an ideal way to add sliding cross beams to facilitate hanging dividers or displays found in trade show booths. 3D box signs or glow walls with interior lighting are easily fabricated and quickly assembled using this extrusion, as are backlit floors. The L can also be used as an inside corner for more complicated geometric structures.

T: Three slots allow side walls or panels to be added into long straight runs using the T vertically, with the wall ends simultaneously finished and supported by a Terminal end. Used horizontally as a beam, the T can act as a top track for a sliding curtain or support for a rigid panel while supporting two horizontal fabric or solid ceiling panels.

X: This extrusion is actually a + with 4 slots at 90°, making it perfect to construct free standing pods of cubicles or cabanas or as a center support for a table.

Terminal: As elegantly finished as its more complicated family members, this extrusion with its single slot is most often used vertically to finish or support the end of a panel. Horizontally, it can be used as a track to support or hang sliding panels or fabric walls. Used as a top and bottom track with DeepStream's un-jammable track slides it is perfect for windy locations or as a top to a panel where a more rigid extrusion is needed than the standard light weight U-channel. With a slot milled into the channel, even captured curtains can quickly be removed and brought in every evening or in case of storms.

Intermediary: Two slots in 180° opposition, use this extrusion vertically to join two panels. Joining standard 4' X 8" foot panels is often the most economical way to build a dividing wall. Panels can be assembled into a vertical grid using the H-channel to capture abutting edges in a tailored fashion.

Supporting Components:



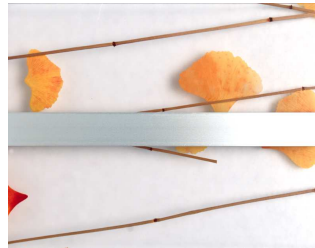
U-channel, a sixth integral component, has many uses. Using post screws to attach it to panel edges, it captures panels or composite panels up to 1/2" thick for insertion into primary extrusions. Material thicker than 1/2" may be routed to fit the channel for a seamless integration into the primary extrusion.

There are a variety of reasons that you might want to use panels thinner than 1/2" captured in U-channel. By using simple shim strips or full backer panels this is quick and easy. A clear overlay panel can be used as a sacrificial covering in areas where there may be vandalism such as graffiti or where the location makes a panel is prone to abrasion. Less expensive thin versions of resin panels such as Reynolds Polymer, 3Form®, Lumicor®, and Veritas® can be used with a clear or white backer panel to value engineer the look you want. U-channel gives a finished look to composite panel edges.

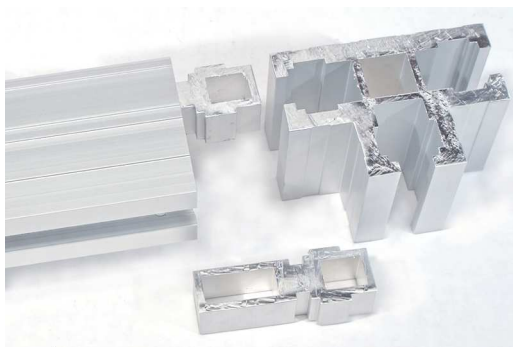


Backwards U-channel, above right, inserted into the **Panel Channel Acceptance Slot**, so the solid face is out, fills the slot to give a finished look. It is used this way vertically to hold up horizontal beams or to hide wiring that is not run inside the **Void**. Short pieces of U-channel can separate panels, or be drilled and tapped for set screws to hold beams or accessories mounted to the slots in any position.

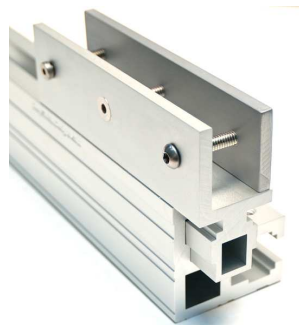
H Channel is used to bring panel edges into alignment in larger installations.



Track-to-Void connectors are used to erect a structure made with any combination of primary extrusions and are placed in the void and a companion extrusion slot to join two extrusions together at 90°.



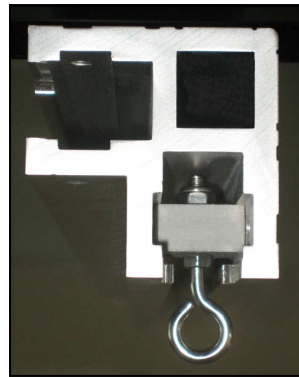
Variable panel clips, 3" or 6" **V-Clips**, slide into the primary extrusions to hold material from 1/8" to 1" thick. These can slide along a **Panel Channel Acceptance Slot** and can be used vertically or horizontally with sliding rigid panels or to hold accessories such as speakers and lights. The larger **V-Clip** distributes the gripping load over a nine-square-inch area allowing the use of even fragile or heavy panels. Optional fasteners include buttonhead, flush flathead and lowhead machine screws.



Inside corner brackets and **inside corner gussets** are used once a structure is in place to make it rigid. These braces are held in place by stainless steel fasteners that are screwed into a threaded backing plate which slides inside the unique **Panel Fastener Acceptance Grooves**. This allows horizontal extrusions to be easily positioned at any point, and just as easily moved.



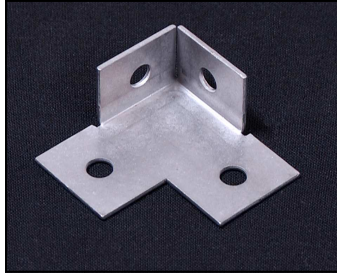
Track Slides, made of HDPE and stainless steel eye bolts, glide effortlessly captured inside the unique **Panel Fastener Acceptance Grooves**. Track slides are used to hold curtains or fabric panels that can be loose footed or captured between the opposing slots of primary extrusions. **Track Slides** have a safe working load of 75 pounds each, so they are perfect to hold displays or merchandise in trade show and event booths.



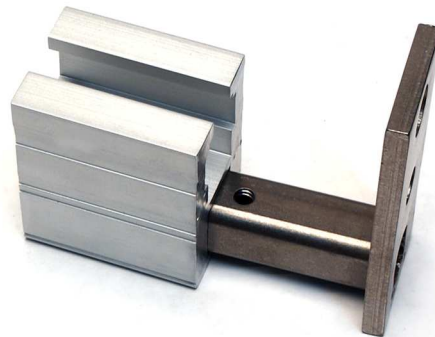
Track Tubes are $\frac{3}{4}$ " Aluminum tubes that slide inside pockets of fabric panels to capture the fabric seamlessly inside the primary extrusion's **Panel Channel Acceptance Slot**. This gives a very clean finished look if you do not need the fabric to slide.



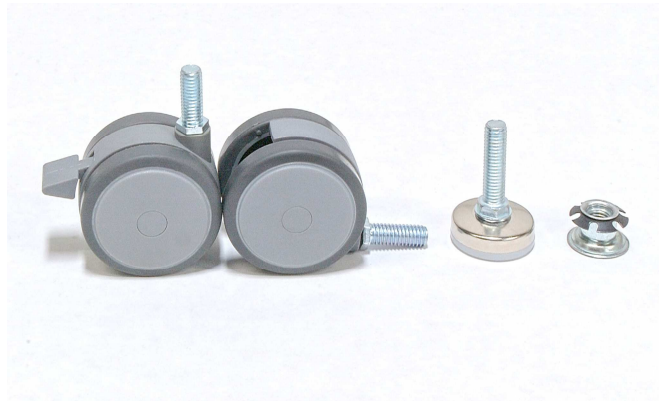
Corner Clips are 16Ga stainless steel clips that have two holes that are perfectly positioned to fit the inside corner of two extrusion faces meeting at right angles. They can be fastened to primary extrusions at any point and allow mounting medium weight lids, floors, shelves, and other accessories.



Mounting feet – designed for each primary extrusion shape, our 1/4-inch stainless steel feet provide secure attachment to the base using 3/8" and 5/16" bolts. There are mounting holes under each of the channels so tabs on the Intermediate and Terminal legs may be cut off for a clean flush look.



Casters and Leveling Feet - mount in the 3/4" voids and are available in many different styles and levels depending on your needs.



HDPE Shim - various widths and lengths to mount in U & H channel to shim out less than 1/2" thick panels. Available in white and aluminum gray, 3/8" and 1/4"



Assembly and Installation is easy! You can use your existing railing or awning company to install these systems. Field work uses simple woodworking miter saws using 70-100 tooth carbide toothed metal blades to cut extrusions and hand grinders to buff edges when necessary to make in-field adjustments.